



**TERRA MOTORS**

No.1 Electric Vehicle Company from JAPAN



# KYORO

ZINDAGI KO DO NAYI  
**RAFTAAR...**

TOP SPEED

**55<sup>+</sup>KM**

ideal for city  
& mixed terrains

EXCEPTIONAL RANGE

**200<sup>KM</sup>**

on a single  
charge

QUICK ACCELERATION

**5.6<sup>SEC</sup>**

instant launch  
to 28 km/h

SUPERIOR GRADEABILITY

**22%**

incline capability  
even under full load

ए.आर.ए.आई  
**ARAI**  
ए.आर.ए.आई.ए.आई.ए.आई.



# JAPAN'S NO.1 IN JUST 2 YEARS

Founded in Japan, Terra Motors Corporation is a global leader in electric vehicle innovation, dedicated to transforming transportation for a better future.

The name “**Terra**,” meaning “**world**” in Latin, embodies our mission to tackle global challenges and create a meaningful impact worldwide.

With a strong presence across Asia, our founder, **Mr. Toru Tokushige**, wants to foster innovation and find solutions by integrating diverse fields. We brought that same spirit of Japanese excellence to India in 2014.

For over a decade, we've been designing and manufacturing electric vehicles specifically for Indian roads. Today, with a comprehensive portfolio that includes 3-wheeler EVs, EV financing and charging solutions, Terra Motors is accelerating EV adoption and building a thriving **EV ecosystem** around it in India.



**Terra Motors India Pvt. Ltd.**

**Terra Financial Services Pvt. Ltd.**

**Terra  
Charge**

**Terra Charge Company (Thailand) Co. Ltd.**

**Terra Charge India Pvt. Ltd.**

**Pt Terra Charge Indonesia**



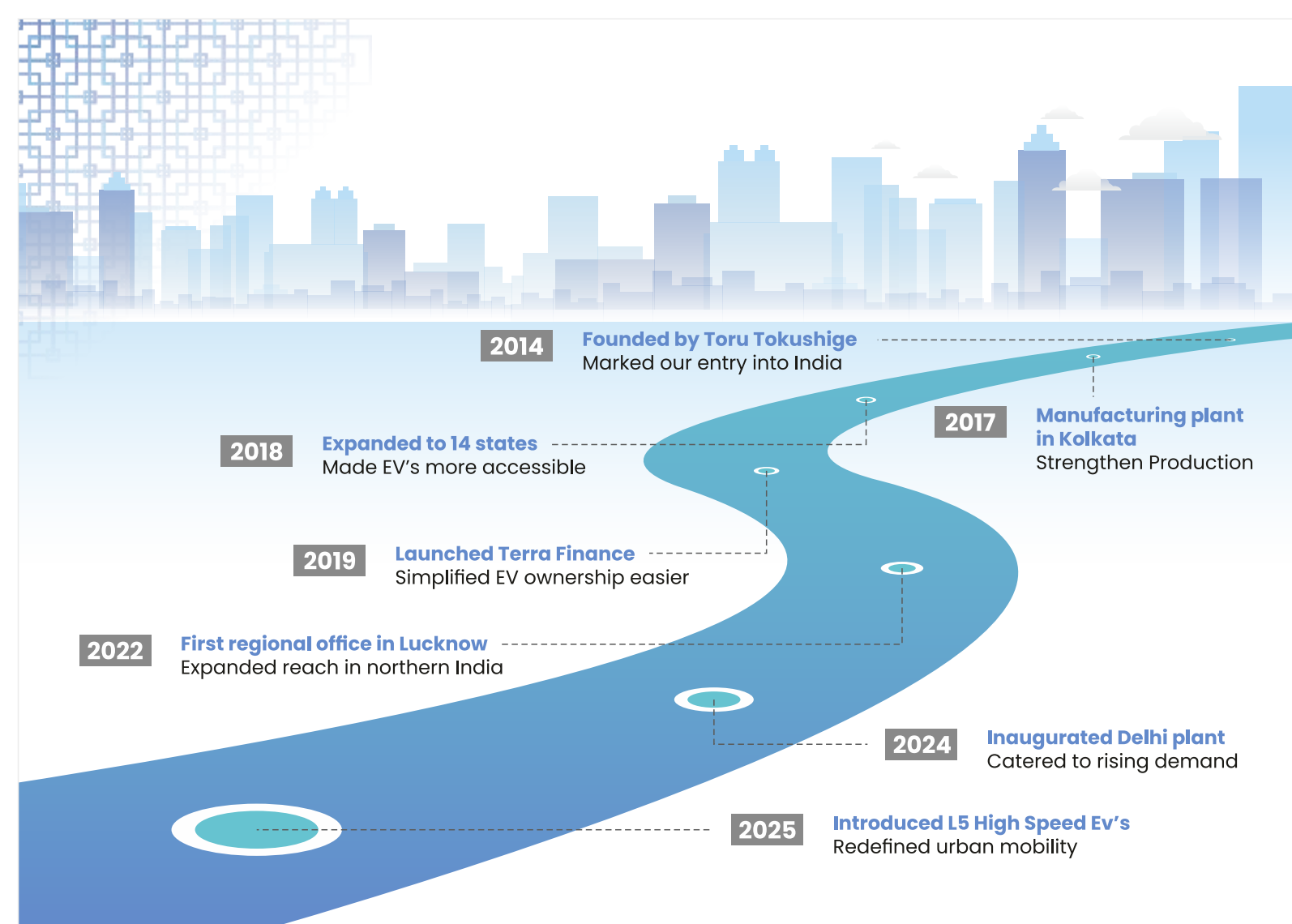
**Terra Drone Corporation**



# MR. TORU TOKUSHIGE

FOUNDER

A graduate of Kyushu University and MBA holder from Thunderbird School of Global Management, he began his career in corporate planning before moving to Silicon Valley to support startups. In 2010, he founded Terra Motors, which became Japan's leading electric motorcycle brand. He later launched Terra Drone, a global leader in drone and Urban Air Mobility technologies, transforming industries through innovation in aerial solutions.



# KYORO+



**KYORO+** isn't just an electric auto. It's a **new-age mobility solution** crafted with a purpose, **rooted in Japan and made to move India.**

Derived from the Japanese word "Kyorō" (キヨロ), which expresses agility, and a quick glance or move, our vehicle lives up to its name — smart, swift, and always ready to move forward.



## Exceptional Range

Achieve an impressive range of up to 200 km on a single charge, setting a new benchmark for daily commuting and logistics operations

## Expansive Seating and Large Luggage Compartment

Enjoy generous seating with ample legroom for a more comfortable and relaxing ride, along with a spacious boot for hassle-free storage & convenient travel

## Powerful Performance

Delivering rapid acceleration from 0 to 28 km/h in just 5.6 seconds. Exceptional 22% gradeability under full load

Top speed of 55 km/h for powerful, confident performance across all terrains

### Motor

Feel the surge of power with **PMSM Motor & Controller**

**IP67 rated motor** is made to with stand India's diverse climate

Flood Resistant Monsoons or dry heat, Kyrro keeps going strong

### Speed 55+ KM

Glide through traffic & congestion easily

### Gradeability

**2 speed Gearbox** for higher Gradeability for upto 22%

Making hilly roads & flyovers feel flat

Enhanced Pickup ensures you accelerate swiftly & smoothly

# BUILT FOR + MOMENTUM

High Speed, High Performance





Charge up to **0-80% in just 3 hrs 15 mins**, so you're always ready to roll—no waiting around

**Range – With 200km range on a single charge**, Kyoro gives you the freedom to ride farther without constantly checking your battery bar

Avoid Range anxiety with high-capacity **11.7 kWh battery**

# BUILT FOR + CONFIDENCE


No Range Anxiety Just Reliability



Count your savings! It runs **significantly cheaper than petrol or diesel**, giving you better returns every kilometer

Stay worry free with **an intelligent safety alarm** system that protects the battery against overheating beyond **55°C**

 **Battery Alarm**  
Alerts you of overheating risks

 **Hazard Switch**  
Instant signaling in emergencies

 **Reserve Mode**  
Extra **13 km** reserve mileage when the battery runs low

# BUILT FOR + PEACE OF MIND

Strong Warranty, Stronger Trust

**5-Year / 1,20,000KM Warranty** Long-term peace of mind, mile after mile

**3 Free Services** Hassle-free maintenance to get you started right

**Pan-India Service Network** Reliable support, wherever the road takes you

**Spare Parts Readily Available** Across our entire dealer network

**Dedicated Service Bays at Dealerships** Professional care, always within reach



WHAT COMES WITH THE VEHICLE | TOOLKIT | USER MANUAL | SERVICE MANUAL





# BUILT FOR+ PROGRESS

From Japan to India



## Strong Built

Aerodynamically Designed Metal Front Facia for better Protection



## All-Weather Ready

Anti-Rust powder coated metal parts for longer durability



## Spacious

Ergonomically Designed Seating makes it spacious & comfortable



## Smooth Ride

Independent swigging arm with Helical Suspension for ride quality



## Save Energy on Braking

Hydraulic central Braking System with Regenerative Braking



## LED Light

Higher energy efficiency & longer range



# BUILT FOR+ EASY OWNERSHIP

Own Today, Pay Later



## Zero Down Payment

Drive home your Kyoro with no upfront cost

## Powered by Terra Finance

In-house financing designed for your convenience

## Exclusive Benefits for Terra Customers

Simple, fast & flexible

# TECHNICAL SPECIFICATIONS

Specifications	Unit	Details
Vehicle Type		L5M
Dimensions ( L X W X H)	mm	2810 X 1378 X 1830
Speed	km/h	55
Wheel Base	mm	2080
Wheel size (front)		4 – 12"
Wheel size (rear)		4 – 12"
Seating: 5 No. of Passengers	No	D+3
Vehicle kerb weight	kg	450
Vehicle gross weight	kg	750
Climbing Capacity	%	20
Range (ARAI)	km	200
Reserve Battery Capacity	km	13

Specifications	Unit	Details
Voltage rating	V	48
Rated power	kW	5.5
Peak power	kW	8.0
Battery Type		Fixed
Battery Chemistry		LFP
Battery Capacity	kWh	11.7 (Usable 10.5)
Battery Nominal Voltage	V	51.2
Charger Capacity	A	50A
Time for Charging	hr	4 to 5
Ground Clearance	mm	180
Cluster		Digital

Specifications	Details
Transmission	Articulated trailing arm Transmission
Differential	Constant Mesh 2 Stage Reduction With Integrated Differential
Gear box	Highly Durable and Sturdy 2 speed Gearbox with Clutch mechanism
Brake type	Hydraulic Drum Brake
Suspension (Front)	Hydraulic Telescopic Shock Absorber With Helical Compression Spring and Damper
Suspension (Rear)	Hydraulic Telescopic Shock Absorber With Helical Compression Spring and Damper
Motor Type	PMSM

## Business Address :

Terra Motors India Pvt. Ltd.  
Plot No.9, Sector-8, IMT Manesar, Gurugram-122051

## Contact Number :

+91 9147752921

## Head Office :

Stesalit Tower, 8th floor, GP Block, E-2-3, Sector V,  
Salt Lake, Bidhan Nagar, Kolkata, West Bengal-700091

## E-mail Id :

ev.auto@terramotors.co.jp